

Client

Website



Website

Lab

Label: 250mg Hemp Extract

Client: | Rockys Hot Sauce
 Batch Number: |
 Internal Number: | BT-345-11273
 Container: | Bottle
 Type: | Food Product



Botanica Testing Inc.

747 SW 2nd Ave, Suite 306 IMB 12
 Gainesville, FL 32601
 317-361-5044
 Adam@botanicatesting.com
 Dan@botanicatesting.com
<https://botanicatesting.com/>

Results: Bottle
CBD (mg) - 147ml
250.2

Conclusion:

Adam Christensen
 Adam Christensen
 Chief Executive Officer



Daniel Morgan
 Daniel Morgan Ph.D.
 Chief Scientific Officer

Total CBD
0.17%

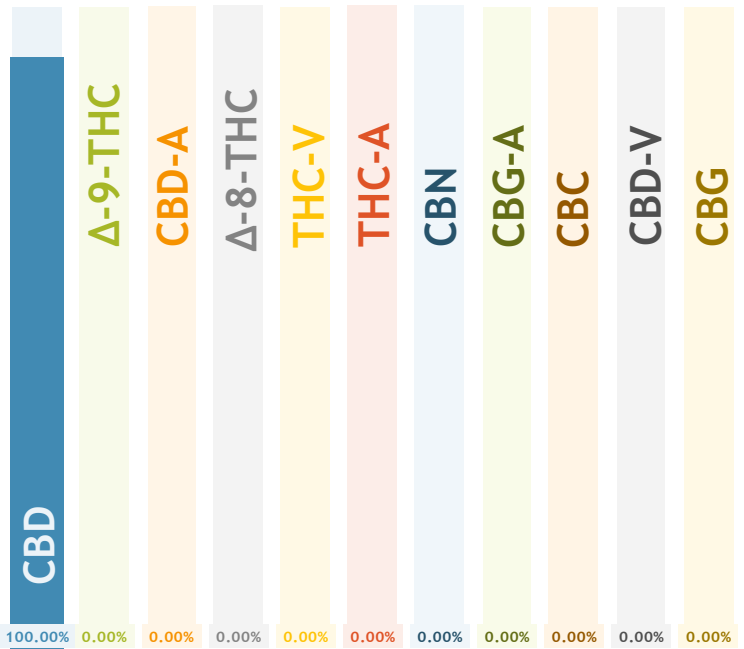
Total THC
0.00%



Cannabinoids By Weight:

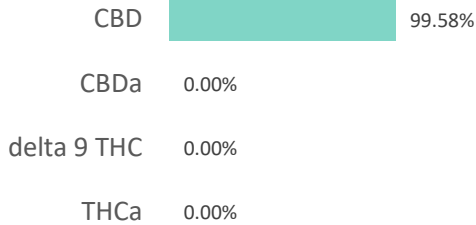
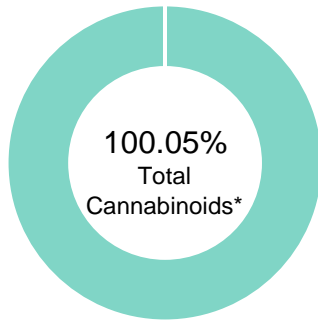
Cannabinoids	mg/g	%
CBD	1.70	0.17%
Δ-9-THC	ND	ND
CBD-A	ND	ND
Δ-8-THC	ND	ND
THC-V	NT	NT
THC-A	ND	ND
CBN	ND	ND
CBG-A	ND	ND
CBC	ND	ND
CBD-V	ND	ND
CBG	ND	ND
Total mg/g	1.70	

Percentage of Total Cannabinoids



42383 BB54

Batch ID:	N/A	Test ID:	4166090.0036
Reported:	26-May-2019	Method:	TM14
Type:	Concentrate		
Test:	Potency		

CANNABINOID PROFILE


Compound	LOQ (%)	Result (%)	Result (mg/g)
Delta 9-Tetrahydrocannabinolic acid (THCA-A)	0.29	0.00	0.0
Delta 9-Tetrahydrocannabinol (Delta 9THC)	0.14	0.00	0.0
Cannabidiolic acid (CBDA)	0.19	0.00	0.0
Cannabidiol (CBD)	0.11	99.58	995.8
Delta 8-Tetrahydrocannabinol (Delta 8THC)	0.16	0.00	0.0
Cannabinolic Acid (CBNA)	0.39	0.00	0.0
Cannabinol (CBN)	0.17	0.00	0.0
Cannabigerolic acid (CBGA)	0.25	0.00	0.0
Cannabigerol (CBG)	0.14	0.00	0.0
Tetrahydrocannabivarinic Acid (THCVA)	0.24	0.00	0.0
Tetrahydrocannabivarin (THCV)	0.13	0.00	0.0
Cannabidivarinic Acid (CBDVA)	0.18	0.00	0.0
Cannabidivarin (CBDV)	0.10	0.47	4.7
Cannabichromenic Acid (CBCA)	0.21	0.00	0.0
Cannabichromene (CBC)	0.26	0.00	0.0
Total Cannabinoids		100.05	1000.50
Total Potential THC**		0.00	0.00
Total Potential CBD**		99.58	995.80


NOTES:

N/A

% = % (w/w) = Percent (Weight of Analyte / Weight of Product)


* Total Cannabinoids result reflects the absolute sum of all cannabinoids detected.

** Total Potential THC/CBD is calculated using the following formulas to take into account the loss of a carboxyl group during decarboxylation step.

$$\text{Total THC} = \text{THC} + (\text{THCa} * (0.877)) \text{ and Total CBD} = \text{CBD} + (\text{CBDa} * (0.877))$$
FINAL APPROVAL


Daniel Weidensaul
 25-May-2019
 12:12 PM

PREPARED BY / DATE



Mike Branvold
 26-May-2019
 7:14 AM

APPROVED BY / DATE

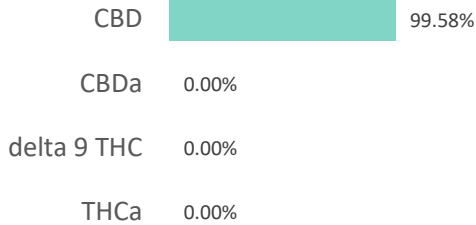
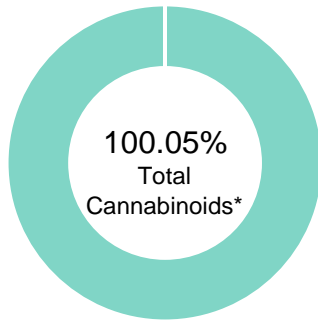
Testing results are based solely upon the sample submitted to Botanacor Laboratories, LLC, in the condition it was received. Botanacor Laboratories, LLC warrants that all analytical work is conducted professionally in accordance with all applicable standard laboratory practices using validated methods. Data was generated using an unbroken chain of comparison to NIST traceable Reference Standards and Certified Reference Materials. This report may not be reproduced, except in full, without the written approval of Botanacor Laboratories, LLC. ISO/IEC 17025:2005 Accredited A2LA Certificate Number 4329.02



Certificate #4329.02

42383 BB54

Batch ID:	N/A	Test ID:	4166090.0036
Reported:	26-May-2019	Method:	TM14
Type:	Concentrate		
Test:	Potency		

CANNABINOID PROFILE


Compound	LOQ (%)	Result (%)	Result (mg/g)
Delta 9-Tetrahydrocannabinolic acid (THCA-A)	0.29	0.00	0.0
Delta 9-Tetrahydrocannabinol (Delta 9THC)	0.14	0.00	0.0
Cannabidiolic acid (CBDA)	0.19	0.00	0.0
Cannabidiol (CBD)	0.11	99.58	995.8
Delta 8-Tetrahydrocannabinol (Delta 8THC)	0.16	0.00	0.0
Cannabinolic Acid (CBNA)	0.39	0.00	0.0
Cannabinol (CBN)	0.17	0.00	0.0
Cannabigerolic acid (CBGA)	0.25	0.00	0.0
Cannabigerol (CBG)	0.14	0.00	0.0
Tetrahydrocannabivarinic Acid (THCVA)	0.24	0.00	0.0
Tetrahydrocannabivarin (THCV)	0.13	0.00	0.0
Cannabidivarinic Acid (CBDVA)	0.18	0.00	0.0
Cannabidivarin (CBDV)	0.10	0.47	4.7
Cannabichromenic Acid (CBCA)	0.21	0.00	0.0
Cannabichromene (CBC)	0.26	0.00	0.0
Total Cannabinoids		100.05	1000.50
Total Potential THC**		0.00	0.00
Total Potential CBD**		99.58	995.80

NOTES:

N/A

% = % (w/w) = Percent (Weight of Analyte / Weight of Product)


* Total Cannabinoids result reflects the absolute sum of all cannabinoids detected.

** Total Potential THC/CBD is calculated using the following formulas to take into account the loss of a carboxyl group during decarboxylation step.

$$\text{Total THC} = \text{THC} + (\text{THCa} * (0.877)) \text{ and Total CBD} = \text{CBD} + (\text{CBDa} * (0.877))$$
FINAL APPROVAL


Daniel Weidensaul
 25-May-2019
 12:12 PM

PREPARED BY / DATE



Mike Branvold
 26-May-2019
 7:14 AM

APPROVED BY / DATE

Testing results are based solely upon the sample submitted to Botanacor Laboratories, LLC, in the condition it was received. Botanacor Laboratories, LLC warrants that all analytical work is conducted professionally in accordance with all applicable standard laboratory practices using validated methods. Data was generated using an unbroken chain of comparison to NIST traceable Reference Standards and Certified Reference Materials. This report may not be reproduced, except in full, without the written approval of Botanacor Laboratories, LLC. ISO/IEC 17025:2005 Accredited A2LA Certificate Number 4329.02



Certificate #4329.02